

# 55 New Street Wem SY4 5AE



**4 Bedroom House - Terraced**  
**Offers In The Region Of £250,000**

## The features

- CHARMING PERIOD TOWN HOUSE
- LIVING AND DINING ROOMS WITH FEATURE FIREPLACES
- 4 GENEROUS BEDROOMS, BATHROOM AND SHOWER ROOM
- ENVIABLE LOCATION A STONES THROW FROM TOWN AMENITIES
- EPC RATING D
- NEARLY 2,000 SQ FT OF VERSATILE LIVING OVER 3 FLOORS
- GOOD SIZED KITCHEN AND UTILITY/BOOT ROOM
- DELIGHTFUL ENCLOSED WALL GARDEN
- VIEWING RECOMMENDED



### \*\*\* CHARMING 4 BEDROOM PERIOD TOWN HOUSE \*\*\*

An exciting opportunity to acquire this period Town house offering spacious and versatile accommodation over 3 floors. Ideal for a growing family or those who work from home.

Set in an enviable position in the heart of the popular market Town of Wem being a short stroll from a range of amenities including supermarket, schools, doctors, public houses, churches, active Town Hall and Railway Station with links to Shrewsbury, Crewe and London.

The accommodation briefly comprises Reception Hall, Living Room and Dining Room each with feature fireplaces, Kitchen, Utility, Home Office/Attic Storage, Bedroom with Juliette Balcony and Bathroom on the First Floor and 3 further double Bedrooms and Shower Room on the Second Floor.

The property has gas central heating, original period features and an excellent sized walled rear garden.

Viewing recommended.

## Property details

### LOCATION

Set in an enviable position in the heart of the popular market Town of Wem being a short stroll from a range of amenities including supermarket, schools, doctors, public houses, churches, active Town Hall and Railway Station with links to Shrewsbury, Crewe and London.

### RECEPTION HALLWAY

Approached via panelled front door under decorative fan light and opening into a spacious reception hallway of which radiate the reception rooms. Access to the CELLAR.

### LIVING ROOM

Flooded with light from large window to the front and featuring an original cast-iron fireplace set into wooden surround, recessed alcove and moulded cornicing.

### DINING ROOM

Laid to tile and featuring a log burning stove set into Inglenook fireplace. Opening directly into the

### KITCHEN

Fitted with a range of black high gloss units under contrasting work surfaces incorporating 1.5 stainless steel drainer sink. Further range of matching eyelevel cupboards, integrated dishwasher and a ring burner range cooker.

### UTILITY ROOM

A functional space with ample room for freestanding appliances. Storage cupboard and door directly onto the garden. Stairs lead up to the

### ATTIC ROOM/HOME OFFICE

Accessed via stairs from the utility room. Currently serving as a useful storage space, alternatively this could provide a craft room or home office.

From the hallway, stairs rise to the first floor.

### PRINCIPAL BEDROOM

A delightful room of excellent proportions with striking open fireplace, moulded coving and Juliet balcony to the front enjoying a pleasant open aspect.

### FAMILY BATHROOM

A superbly generous space fitted with traditional white suite comprising freestanding roll top bath with showerhead over, walk-in shower cubicle, low-level flush WC and hand wash basin. Partly tiled with airing cupboard, heated towel rail and window to rear.

Stairs rise to the second floor.

### BEDROOM TWO

Another generously proportioned double bedroom with ample space for freestanding furniture and sash window to the front with open aspect overlooking playing fields.

### BEDROOM THREE

A double bedroom of generous proportions with open front aspect.

### BEDROOM FOUR

A further double bedroom with ample space for freestanding furniture and wall mounted hand wash basin. Window to the rear overlooking the garden.

### SHOWER ROOM

Fitted with white suite comprising walk-in corner shower cubicle, low-level flush WC and hand wash. Radiator and window to rear.

### OUTSIDE

The large wall garden is mainly laid to terracing and lawn for ease of maintenance and enjoys sun throughout the course of the day. To the far boundary is a versatile brick outbuilding which could serve as a workshop or potting shed, with greenhouse to the side.

Side gate with access under archway with flying freehold leading to the front of the property. On street parking available along New Street.

### SERVICES

We are advised that all mains services are connected.

### AGENTS NOTE

There is a flying freehold. This will be confirmed via pre- inquiries.

### GENERAL INFORMATION

#### TENURE

We are advised the property is Freehold. We would recommend this is verified during pre-contract enquiries.

#### COUNCIL TAX BANDING

As taken from the Gov.uk website we are advised the property is in Band D - again we would recommend this is verified during pre-contract enquiries.

#### FINANCIAL SERVICES

We are delighted to work in conjunction with the highly reputable 'Ellis-Ridings Mortgage Solutions' who offer FREE independent advice and have access to the whole market place of Lenders. We can arrange for a no obligation quote or please visit our website



Monks.co.uk where you will find the mortgage calculator. <https://monks.co.uk/buy/mortgage-calculator/>

#### LEGAL SERVICES

Again we work in conjunction with many of the Counties finest Solicitors and Conveyancers. Please contact us for further details and competitive quotations.

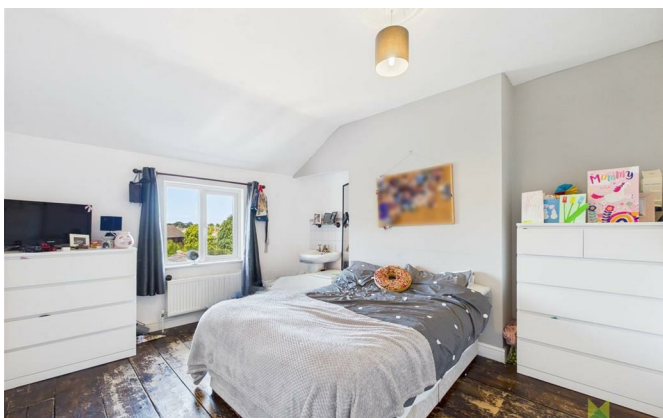
#### REMOVALS

We are proud to recommend Daniel and his team at Homemaster Removals. Please contact us for further details.

#### NEED TO CONTACT US

We are available 8.00am to 8.00pm Monday to Friday, 9.00 am to 4.00pm on a Saturday and 11.00am to 2.00pm on Sunday, maximising every opportunity to find your new home

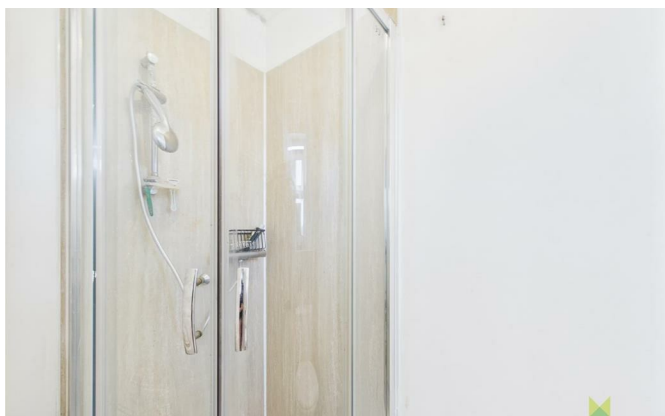






**55 New Street, Wem, SY4 5AE.**

**4 Bedroom House - Terraced**  
**Offers In The Region Of £250,000**





**Judy Bourne**

**Director at Monks**

judy@monks.co.uk

**Get in touch**

**Call.** 01939 234368

**Email.** info@monks.co.uk

**Click.** www.monks.co.uk

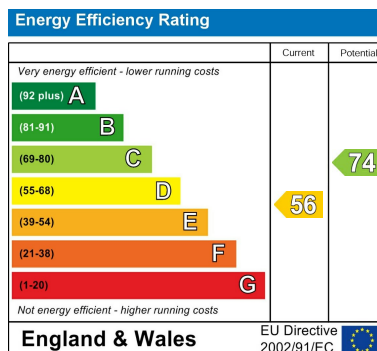
**Wem office**

13A High Street, Wem,  
Shropshire, SY4 5AA

**We're available 7 days a week**

HOME – four words that define who,  
and what we are:

**Honest, Original, Motivated, Empathetic**



Monks for themselves and for the vendors of this property, whose agents they are give notice that:

- These particulars provide a general outline only for the guidance of intended purchasers and do not constitute part of an offer or contract.
- All descriptions, dimensions and distances are approximate, references to state and condition, relevant permissions for use and occupation and other details are provided in good faith and believed to be correct.
- No person in the employment of Monks has any authority to make or give any representation or warranty whatever in relation to this property.
- Electricians and other appliances mentioned in these particulars have not been tested by Monks. Therefore prospective purchasers must satisfy themselves as to their working order.